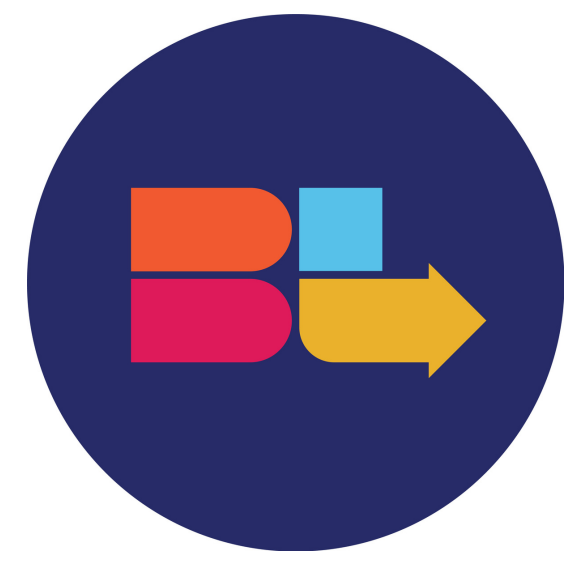
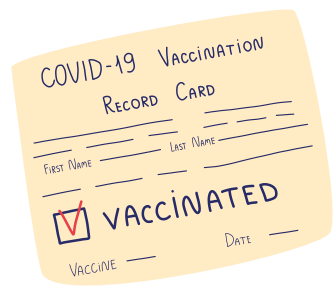


Keep BeLit Safe



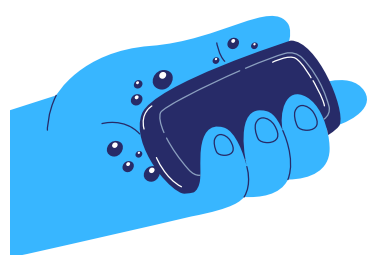
When entering the building...



All in-person learners and intake visitors **must show their vaccine card** & reply to symptom questions.



Wearing a mask is required while indoors regardless of vaccination status.



All persons must **wash or sanitize hands**. Hands should be washed with soap for at least 20 seconds.

In the classroom...

Please stay at least 6 feet apart while in the classrooms, common areas, and hallways.



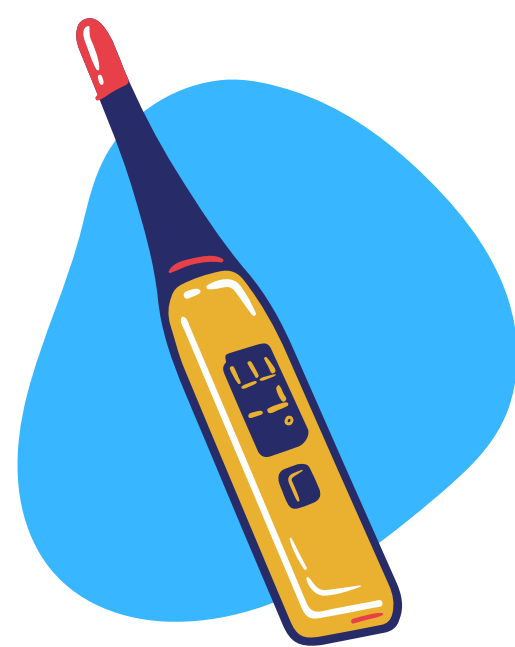
Sanitizer and cleaning supplies are available in all classroom and common areas.



Our centers are regularly disinfected, including tables, doorknobs, light switches, countertops, handles, desks, chairs, phones, keyboards, toilets, faucets, and sinks.

Stay home if...

- You are **"high risk"**
- You are **feeling sick, with or without a fever**
- You have a **sick family member** at home



If you feel sick, have tested positive, or may have been exposed to COVID-19 (via a sick roommate, friend, or family member in your household), please notify a staff person immediately.

You will be asked to self-isolate and to join class remotely for a minimum of 5 days.

BeLit staff will identify and notify anyone who was in close contact with an exposed learner at our centers.

Questions? Call BeLit at 215-474-1235